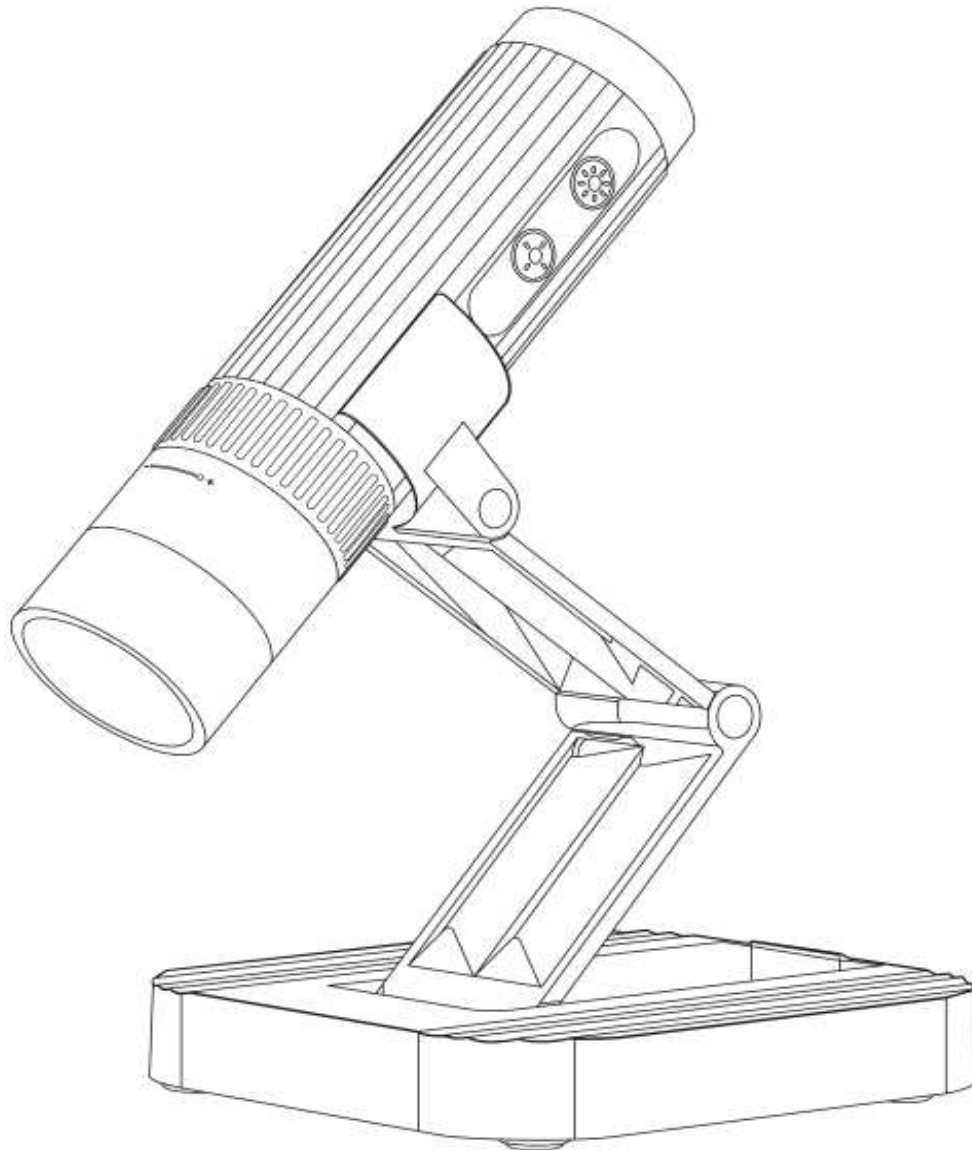


Electron Microscope

Model: WTM-W1-A



User Manual

Please read this user manual carefully and keep it for future reference.

Contents

Read Me First	03
Packing List	03
Parts Description	04
Detailed Operation	05
1. How to zoom in and focus?	05
2. Work with cell phone	06
Download the App	06
Operating steps	06
Introduction of the APP	08
3. Work with Windows	09
Software download	09
Operating steps	09
4. Work with Mac/iMac	10
Software download	10
Operating steps	10
Product Parameters	11
Troubleshoot the Microscope	12

Read Me First

- Thank you for purchasing the WTM-W1-A WiFi digital microscope.
- Please read this user manual carefully and keep it for future reference.
- Pay attention to protect the lens part. Close the lens lid after using to avoid entering dust or strange objects.
- The microscope can be used in hand or inserted as a desktop, with attention to avoid damage to the components.
- When placing items, place them directly below the center of the lens as much as possible. Avoid not seeing objects clearly and bringing about a bad experience.

Packing List



Microscope



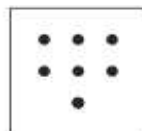
Base



Type-C Data Cable



User Manual



Calibration Card

Parts Description

* Before using the microscope, make sure your hands are secured, or use it on the desktop.

Monomer Microscope

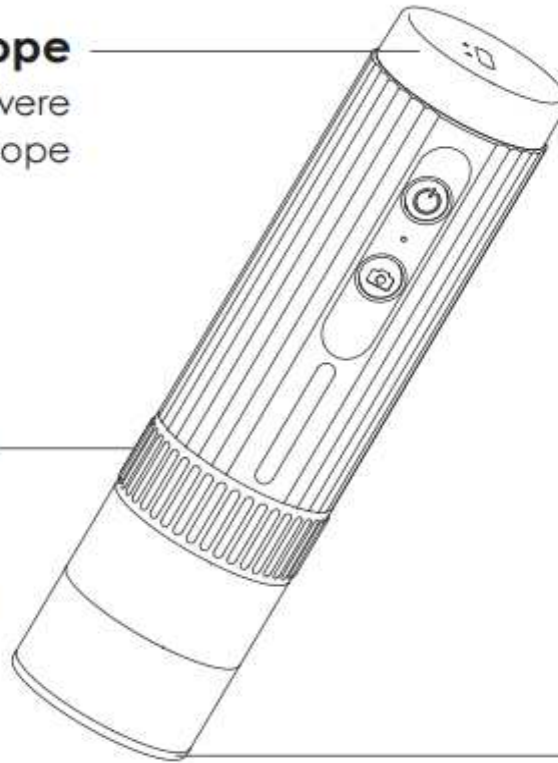
The core components were observed by microscope

Focus Wheel

Multiple Regulation
microscopy optical
focus modulation

Lens Cap

Dust-proof,
protect lens



Power Button

Turn on /off Button

Reset Hole

Resume Factory
Setting

Photo Button

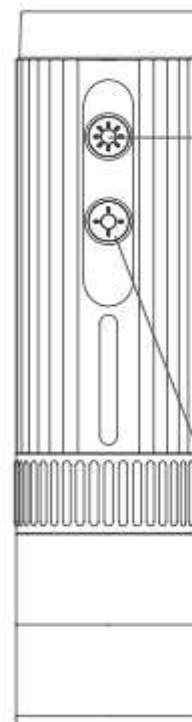
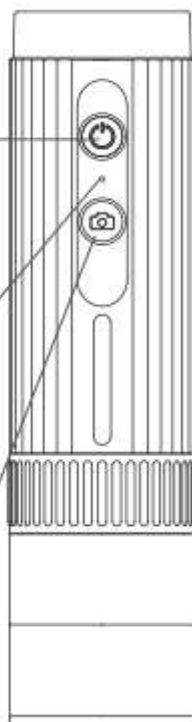
Take a Photo and
Save the
Captured Screen

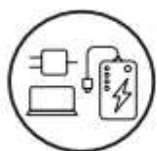
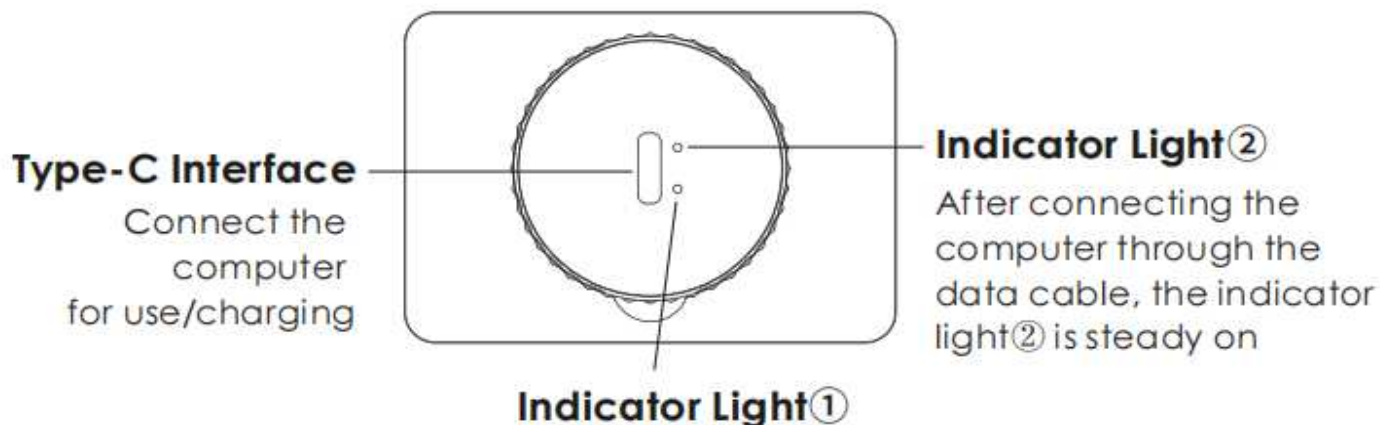
Fill Light Bright Button

Lens Barrel
Fill Light brighten

Fill Light Dim Button

Lens Barrel Fill
Light Dimming





You can use a daily mobile phone charger, computer, and charger to charge the microscope.

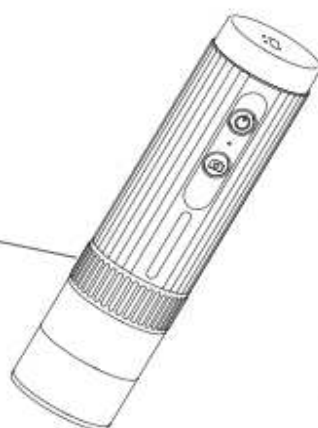
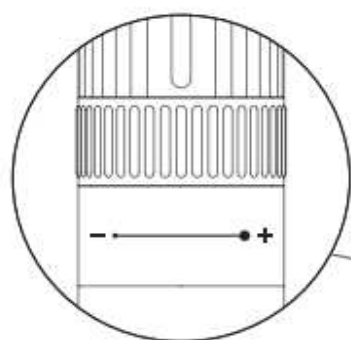


The charging time should not exceed 12 hours to avoid affecting the battery life.

- During the charging process, if the microscope shell and the battery are slightly heated, please rest assured to use the normal phenomenon.

Detailed Operation

1. How to zoom in and focus?



Counter-Clockwise Rotation: multiple magnification



Clockwise Rotation: multiple reduction

(Note: At the same distance, the rotating zoom cylinder has two magnification. To adjust more multiples, it can be adjusted up and down through the microscope base bracket.)

2. Work with cell phone

Download the App

- Scan the QR code, click download and install.
- The mobile terminal is the iOS system, and you can search for "Uni Lab" at APP Store for download



Software to download the QR code



The IOS / Android APP Icon

Operating steps

- **Step 1 Turn on the microscope**

Long press the power button for 3s, and the blue light flashes under the button after turning on, indicating that the app has not been connected yet.

- **Step 2 Connect the microscope to Android / iOS**

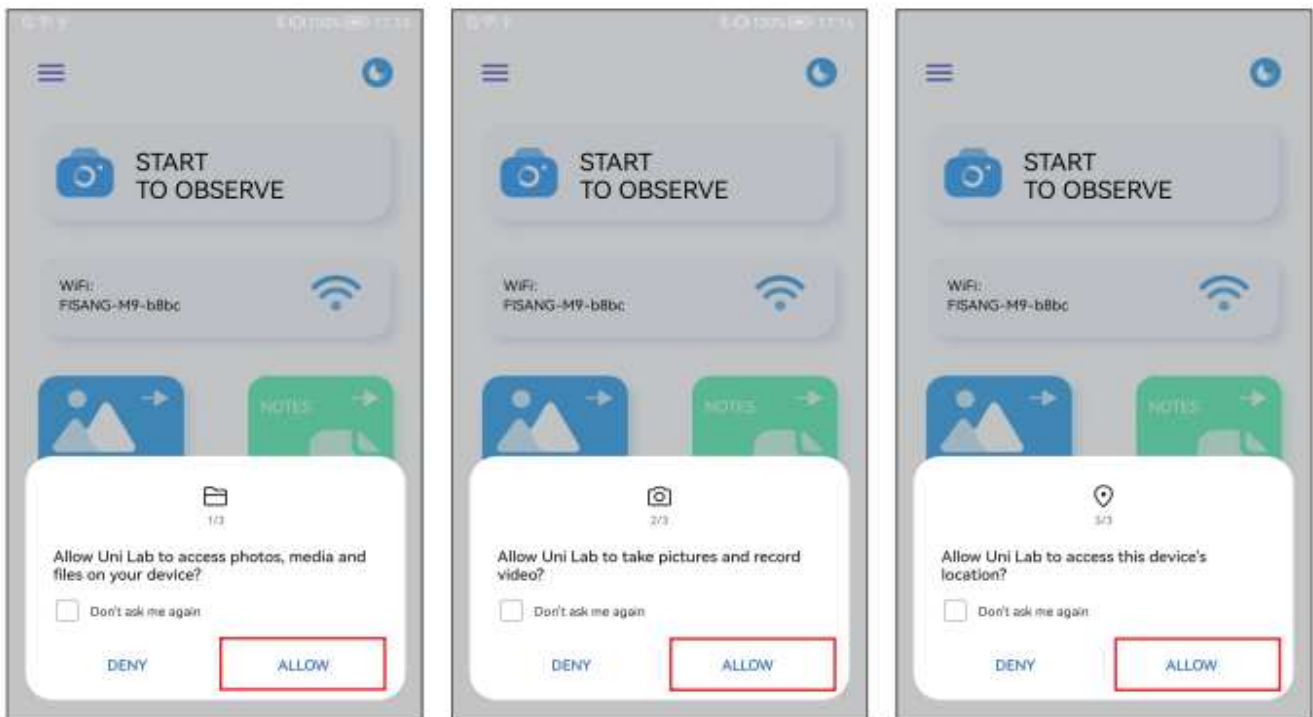
① Open the Uni Lab APP, click WiFi, jump to the WiFi connection page of the Android / IOS device, select the corresponding network name of the product "WTM-W1-XXXXXX" (network without encryption)

② Connect to the network. If the connection confirmation prompt appears, please click "Keep Connected"(Android version) / click "OK"

③ After the connection is successful, the microscope blue lights on. When you return to the app, you can see the image on your phone.

(Note: Please open the phone / tablet location permission when the APP is connected to the microscope.)

Run the APP, and follow the indicated operation steps.
(Follow the red box instructions to make the selection)



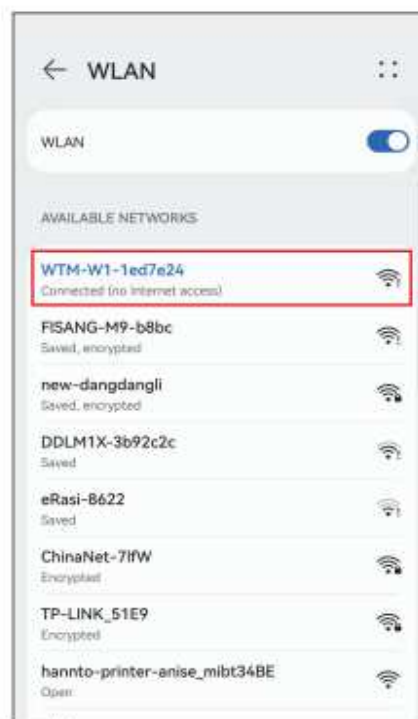
①

②

③



④



⑤

Introduction of the APP

- **APP Homepage**

* Because of the mobile phone model version is different, the pictures are for reference only

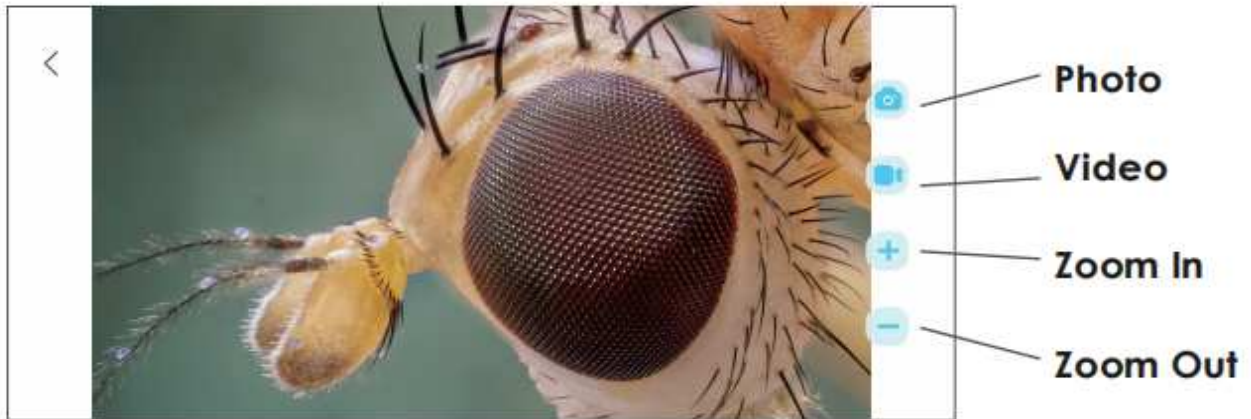


Photo: Select a photo mode

Video: Select the recording mode

Zoom in: Click to zoom in on the screen (use when the screen is too small)

Zoom Out: Click to zoom out the screen (used when the screen is too large, the default is the smallest each time it is opened)

3. Work with Windows

Software download

- The device camera button cannot be used, it can only be realized through software Photo recording function

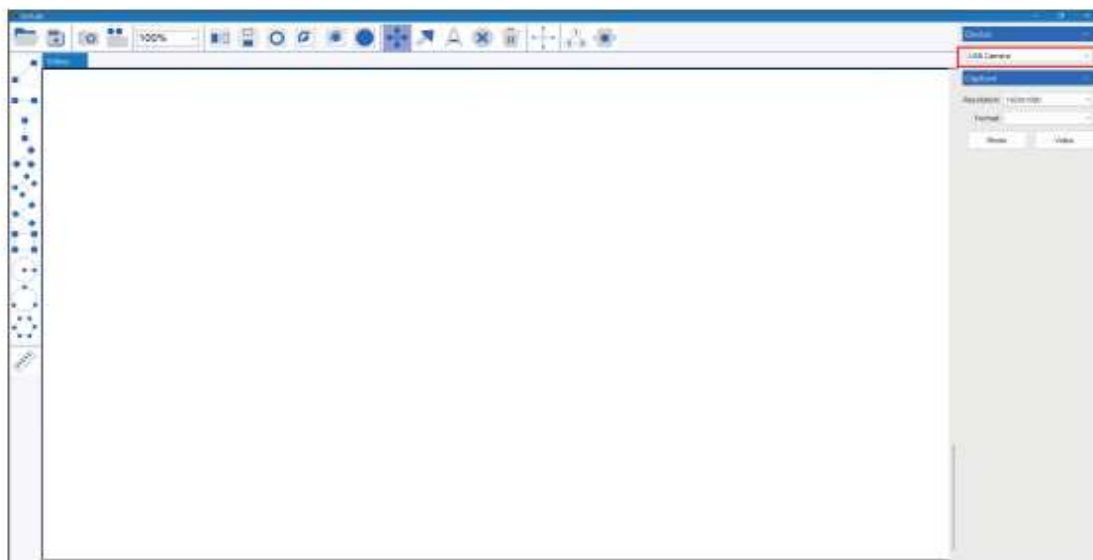
① For Windows 8, Windows 10 or higher system, search "UniLab" (as shown in "  ") in the Microsoft Store to download it.

② For Windows 7 and Windows XP, download the software from the website: <http://www.weetool.net>



Operating steps


- **Step 1** With the microscope turned off, connect the microscope to the computer using a data cable.
- **Step 2** Turn on the microscope, run the software, select the corresponding device name, you can see the image on the computer, and take photos and videos through the software.



4. Work with Mac/iMac

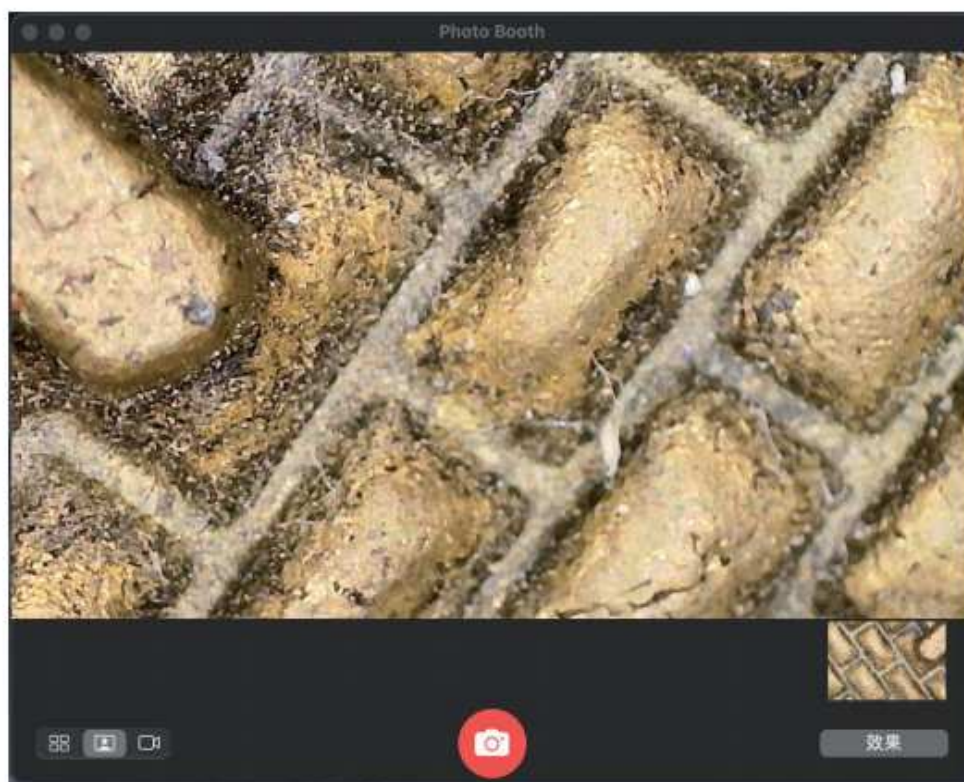
* The device camera button cannot be used, it can only be realized through software Photo recording function

Software download

- For Mac OS x 10.5 or higher system, use the default software "Photo Booth"(as shown in "")

Operating steps

- **Step 1** With the microscope turned off, connect the microscope to the computer using a data cable.
- **Step 2** Turn on the microscope, run Photo Booth, you can see the image on the computer, and take photos and videos through Photo Booth



Product Parameters

Project	Parameter
Picture Format	JPG
Picture Size	1920*1080
LED Quantity	8 SMD 3528 bright white lights (brightness adjustable)
Focus Mode and Focus Range	Manual adjustment, 0 to 40 mm
Imaging Distance	3mm to Infinity
Sensor Size	1/4"
Sensitivity	4300mV/lux-sec
Video Recording Format	AVI
Video Resolution	1920*1080
Working Range	0-10m (Open scene, Sheltered scene will affect working range)
Working Hours	1.5h
Power Supply Mode	700mAh
Charging Requirements	DC-5V~1A
Charging Time	1.5h
Working Current	~260mA
The WiFi Working Environment	Android 4.0 and above systems, ios 8.0 and above systems
PC Operating System	Windows xp, win 7, win 8, win10 , Mac OSx10.5 or higher

Troubleshoot the Microscope

Problem Phenomenon	Cause	Processing Method
The device heats up during charging	During the charging process, the current is large and the battery heat is high, which is a normal phenomenon	The normal state
The APP is disconnected	<ul style="list-style-type: none"> ① The distance is too far ② The device is powered off ③ Equipment failure 	<ul style="list-style-type: none"> ① Close distance repeat connection ② Charge the device and use it ③ Close the APP and restart the device before use
The device cannot be charged	<ul style="list-style-type: none"> ① The charging port is not securely inserted ② No power is connected ③ Equipment failure 	<ul style="list-style-type: none"> ① Remove and reinsert the interface ② Switch on the power
The lens shows blurred images	The ambient temperature changes rapidly, causing the lens to fog	Wait for the temperature balance, a period of time after the fog disappeared to use
The product can not be shut down or the key failure	System halted	Please plug in the power supply to reset and restart

(Note: It is normal for the APP to exit after being plugged in.)